

SECTION 18
T. 8 S., R. 17 E., B.M.
JEFFERSON COUNTY, IDAHO

UNDERGROUND UTILITY NOTE

UNDERGROUND UTILITIES WERE PERFORMED BY OAHU DIG LINE. LOCAL UTILITIES BY DECKMAN'S ARE SHOWN HEREON. Information from the sources checked above was combined with observed evidence of utilities to develop a view of the underground utilities. However, lacking excavation, the exact location of underground features cannot be accurately determined. Utility locations shown on this plan are based on the best available information. Utility locate requests from surveyors may be ignored or result in an incomplete response. Where additional or more detailed information is required, the client is advised that excavation may be necessary.

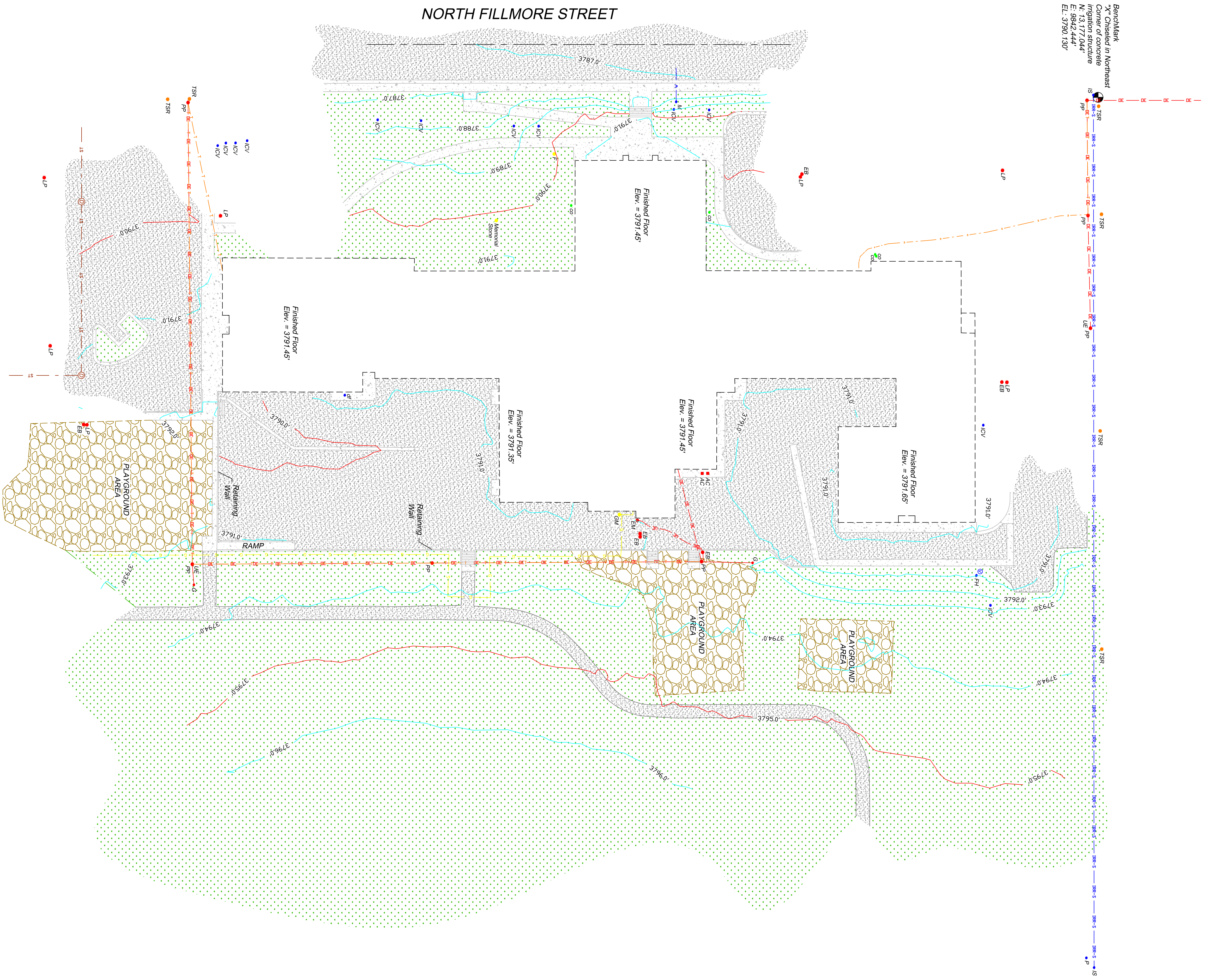
The following companies were contacted by Idaho Dig Line:
CableOne: No Response
CenturyLink: Only markings are shown on north side of building
City of Arlene: Only markings are to Water Meter shown on west side of building
Idaho Power: Only markings were I/O Electric shown on east side of building
Intermountain Gas: Only markings are shown on east side of building
TDS Telecom: Paint marking found saying NO TDS on site
Tison Technology: No Response

VERTICAL DATUM NOTE

The Vertical Datum used on this project is NAVD83.
Elevation Benchmark: ULLS 542 F 342
PID: M10467
Elevation: 3764.44'

LEGEND

- BENCHMARK ESTABLISHED AS NOTED
- OVERHEAD TELEPHONE LINE
- UNDERGROUND TELEPHONE LINE
- OVERHEAD ELECTRICAL LINE
- UNDERGROUND ELECTRICAL LINE
- OVERHEAD IRRIGATION MAINLINE
- BURIED IRRIGATION MAINLINE
- BURIED DOMESTIC WATER LINE
- UNDERGROUND GAS LINE
- UNDERGROUND FIBER OPTIC LINE
- EDGE OF GRAVEL
- BUILDING
- IRRIGATION PUMP
- SPRINKLING PUMP/TANK
- IRRIGATION CONTROL VALVE
- SPRINKLING STRUCTURE
- WATER VALVE
- WATER METER
- FIRE HYDRANT
- CLEANOUT
- STORAGE DRAIN MANHOLE
- POWER POLE
- LIGHT POLE
- GUY ANCHOR
- ELECTRICAL BOX
- ELECTRICAL METER
- UNDERGROUND ELECTRICAL CONDUIT (ROUTE UNKNOWN/NO MARKINGS)
- AC LIMIT
- TELEPHONE SERVICE RISER
- GAS METER
- GAS METER
- FLAG POLE



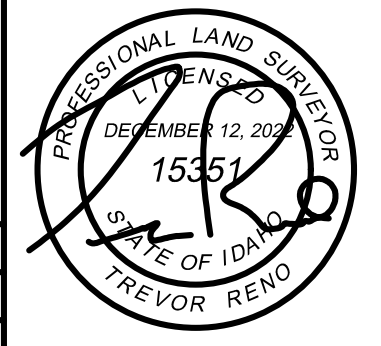
Benchmark
X Chiseled in Northeast
Corner of concrete
N: 43.172044'
E: 9942.444'
EL: 3790.130'

Benchmark
X Chiseled in concrete
Curbline near fence post
N: 12.482.889'
E: 9973.909'
EL: 3789.790'

LIMITED TOPOGRAPHIC SURVEY
for
BRECKON LAND DESIGN

JON BRECKON
JEFFERSON ELEMENTARY SCHOOL

DESERT WEST LAND SURVEYS, P.C.



2020 OVERLAND AVENUE BURLEY, IDAHO 83318 208-678-7112
JOB NO: 15525-22D1 DRAWN BY: T. RENO
DATE: DECEMBER 12, 2022 © Desert West Land Surveys, P.C.